



The Earth provides us with a home, while the sky protects us from the harshness of space.

### Earth as a planet:

Earth is the only planet known to support life.

Earth is sphere in shape.

Earth is made up of:

- ❖ Land (29%)
- ❖ Water (71)

### Land:

The green color shows the land area.

Land area consists of:

- ❖ Mountains
- ❖ Hills
- ❖ Valleys
- ❖ Plains
- ❖ Deserts.

### Students' Learning Outcomes

Identify Earth as a planet.

Recognize the shape of the Earth.



### Students' Learning Outcomes

Recognize that the Earth is covered with land and water.



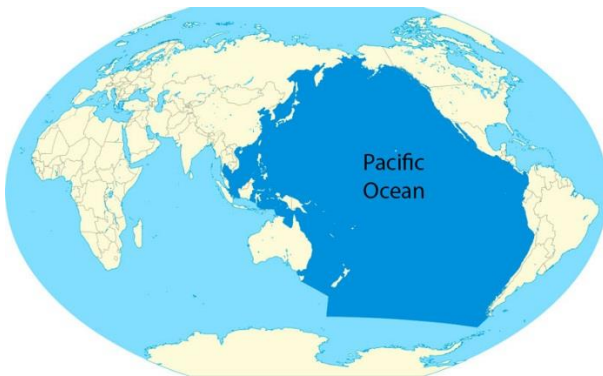


## Water:

The blue color shows the water area.

Water area consists of:

- Rivers
- Lakes
- Ponds
- Streams
- Seas



**FUN**

**FACT**

The largest ocean on  
Earth is the Pacific  
Ocean.

## Sky:

Look up at the sky and see so many beautiful colours.

The sky is also home to many objects, such as:

- ❖ The sun
- ❖ The moon
- ❖ Stars

### Students' Learning Outcomes

Identify objects in the sky during day and night.





### The Sun:

- The Sun is a star.
- The Sun is round in shape.
- It shines brightly.
- It gives us heat and light.

#### Students' Learning Outcomes

Recognize that the Sun shines very brightly during the day and gives us heat and light.



#### Day

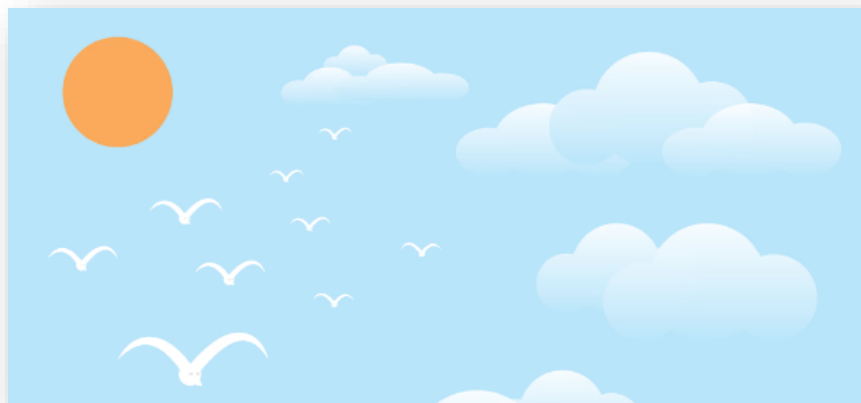
The part of earth facing the Sun has **Day**.

The Sun rises in the East and the day begins.

#### Night

The part of Earth away from the Sun has **Night**.

The Sun sets in the west and the night falls.





## The Moon

- ❖ We see moon at night. It is silvery, white.
- ❖ It is round in shape.
- ❖ It is smaller than the Sun.
- ❖ It changes its shape every night.
- ❖ It takes light from the Sun.
- ❖ It has no air and water.

### Students' Learning Outcomes

Recognize that the Sun shines very brightly during the day and gives us heat and light.



## Stars:

- ❖ At night, we can see millions of shiny objects at the sky, called Stars.
- ❖ Stars have their own light.
- ❖ Stars are very far from the Earth.
- ❖ They form beautiful patterns in the sky.

